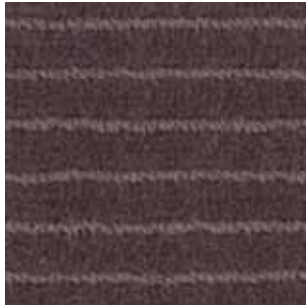
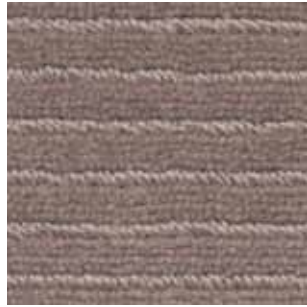


posh





posh - nero 7713



posh - clay 7769



posh - off white 7757

## posh

### sizes

available in broadloom and rugs

### wilton woven

cutpile/looppile - ISO 2424

### pile composition

100 % pure wool - directive 96/73 - 96/74

### pile weight

ca. 1350 g/m<sup>2</sup> - ISO 8543

### total weight

ca. 2200 g/m<sup>2</sup> - ISO 8543

### pile height

ca. 7 mm - ISO 1766

### total height

ca. 9 mm - ISO 1765

### backing

PES/cotton, jute & latex - ISO 2424

### knots

ca. 102400/m<sup>2</sup> - ISO 1763

### width

4 m - ISO 3018

### use

class 32 commercial general - slip resistance - reaction to fire

